



Theo**TRADE**

Live @ 7:00 pm Central Time

Finding Consistent Profits in a Market Gone Wild

with Don Kaufman



Theo**TRADE**

Risk Disclosure

- **We Are Not Financial Advisors or a Broker/Dealer:** Neither TheoTrade® nor any of its officers, employees, representatives, agents, or independent contractors are, in such capacities, licensed financial advisors, registered investment advisers, or registered broker-dealers. TheoTrade® does not provide investment or financial advice or make investment recommendations, nor is it in the business of transacting trades, nor does it direct client commodity accounts or give commodity trading advice tailored to any particular client's situation. Nothing contained in this communication constitutes a solicitation, recommendation, promotion, endorsement, or offer by TheoTrade® of any particular security, transaction, or investment.
- **Securities Used as Examples:** The security used in this example is used for illustrative purposes only. TheoTrade® is not recommending that you buy or sell this security. Past performance shown in examples may not be indicative of future performance.
- **Return on Investment "ROI" Examples:** The security used in this example is for illustrative purposes only. The calculation used to determine the return on investment "ROI" does not include the number of trades, commissions, or any other factors used to determine ROI. The ROI calculation measures the profitability of investment and, as such, there are alternate methods to calculate/express it. All information provided are for educational purposes only and does not imply, express, or guarantee future returns. Past performance shown in examples may not be indicative of future performance.
- **Investing Risk:** Trading securities can involve high risk and the loss of any funds invested. Investment information provided may not be appropriate for all investors and is provided without respect to individual investor financial sophistication, financial situation, investing time horizon, or risk tolerance.
- **Options Trading Risk:** Options trading is generally more complex than stock trading and may not be suitable for some investors. Granting options and some other options strategies can result in the loss of more than the original amount invested. Before trading options, a person should review the document Characteristics and Risks of Standardized Options, available from your broker or any exchange on which options are traded.
- No part of this presentation may be copied, recorded, or rebroadcast in any form without the prior written consent of TheoTrade®.
- **No Soliciting. No Recording. No Photography.**

Copyright Disclaimer

All rights reserved. This Material may not be reproduced or distributed, in whole or in part, without prior written permission of TheoTrade, LLC. Any other reproduction or distribution, in whatever form and by whatever media, is expressly prohibited without the prior written consent of TheoTrade, LLC. For further information, please contact:

TheoTrade, LLC

16427 North Scottsdale Rd. # 410

Scottsdale, Arizona 85254

Telephone: 1-800-256-8876

Email: support@theotrade.com

This is Why You Are Here!

By the end of this webcast I want you to walk away with the following knowledge

1. How you can use my favorite market instruments to profit from changes in market volatility so you're not only a directional trader.
2. Discover volatility ranking and how to use this tool in order to produce potential profits.
3. Learn to take directional bias out of the market and use the power of volatility to your advantage!
4. The logic and strategic formula behind Gamma Irons, so you understand why these trades work right now.

Our Gift to YOU!

FREE

Stay with me till the end of the webcast

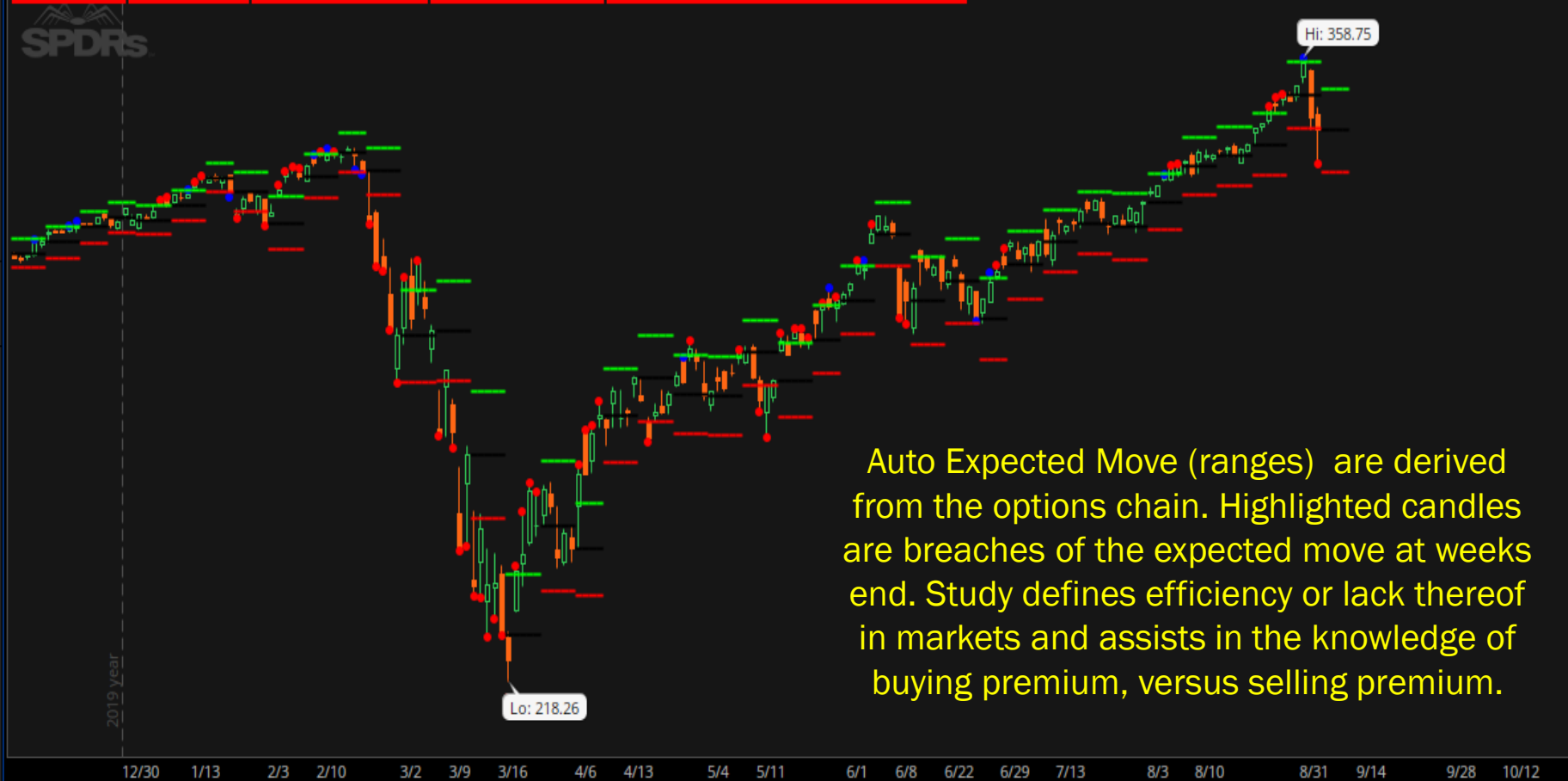
\$497 value

- Auto Expected Move Indicator -

Single most advanced indicator ever compiled
The indicator that has changed the way we view markets!

↑	don1	1 min clean	QuantTicks	ImplVolRange	YTD percentage	Auto EMs	TheoRSI			All			
SPY 9 M 1D [NYSE]	D: 9/4/20	O: 346.13	H: 347.83	L: 334.87	C: 342.57	R: 12.96	TheoTrade_Expected_Move (70, 100, 90, no, no, yes, yes, yes, yes, no, yes, no, no, no)	357.99	343.17	N/A	334.87	N/A	N/A

Last IV = 0.2355 | Last EM = 7.4098 | Last High Bar = 357.9898 | Last Low Bar = 343.1702 | EM Skew%/Std Dev Adj(%)/Touches% = 70/100/90



Auto Expected Move (ranges) are derived from the options chain. Highlighted candles are breaches of the expected move at weeks end. Study defines efficiency or lack thereof in markets and assists in the knowledge of buying premium, versus selling premium.

370
358.75
352.04
350
342.57
340
333.1
330
320
310
299.42
290
280
270
260
250
240
230
220
210

House Keeping !

- This is a skill set and you need pay attention during the following course material.
- Shut the door
- Turn off Skype, chat, or whatever else is distracting you
- Close Facebook
- Phones on silent mode
- Kick out the kids, grandkids however, the dog can stay (if its quiet)!
- You took the time to be here... this is important, now focus on being here!



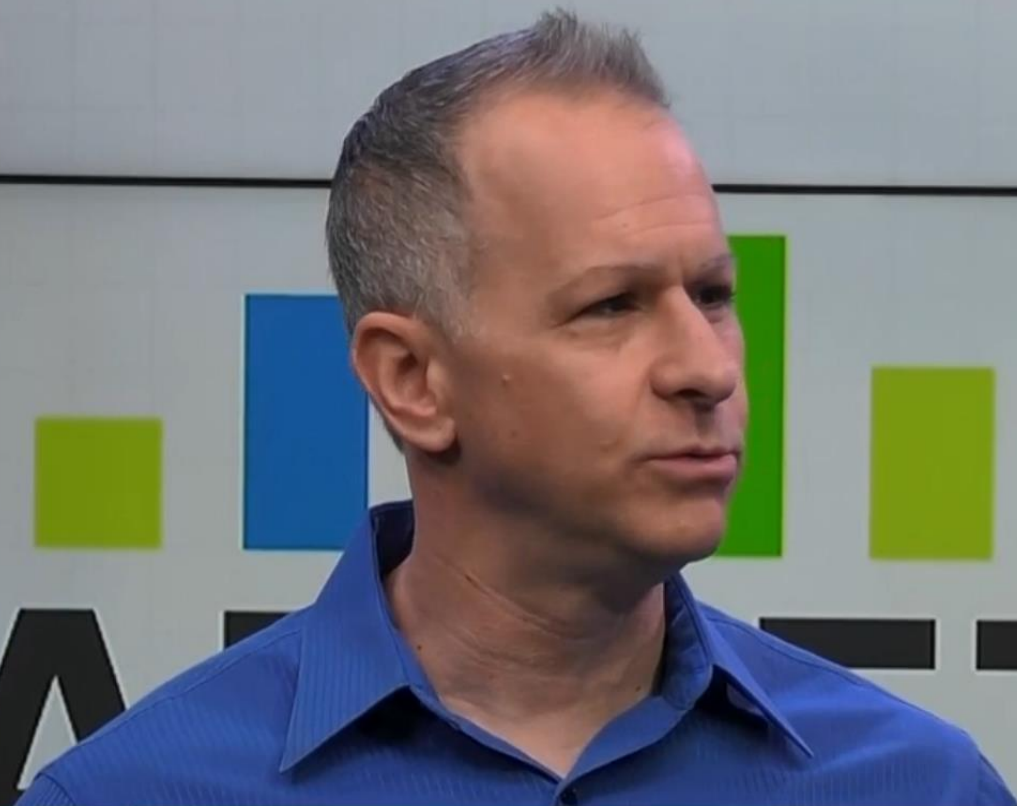
I watched order flow for 15 years.... that's why I am here

- I grew up around traders and started trading in the late 90's.
- I went on to work with thinkorswim and TD Ameritrade from 2001 to 2015.
- In that time I built and ran education for both firms, more importantly had access to the largest retail order flow in the industry.
- What's watching order flow? Well... that means I had access to everything you did.
- We studied trades and we know what works and what does not.
- What you learn here comes from watching billions in others mistakes and the knowledge of what works best for retail traders.



Don Kaufman

8/21/19



TGT

102.51

+16.98

+19.85%

Y/Y EPS: \$1.82 VS \$1.47 LAST YEAR

TD Ameritrade
NETWORK

/ES

2923.75 +0.88%

/YM

26187.00 +0.99%

/NQ

7734.25 +0.86%

/RTY

1511.20 +0.99%



MARKETS
NOW

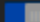
SHORT SELLERS TAKE A
BITE OUT OF APPLE

CNBC

Embrace the Chaos People!

Volatility is GOOD!

First, what is possible in the Extreme?

5 Day Net Liquidating Value  Privacy

2/27/20	2/26/20	2/25/20	2/24/20	2/23/20
\$248,451.50	\$238,718.08	\$237,867.60	\$225,876.31	\$211,929.00
Today	B - 1	B - 2	B - 3	B - 4
0	+1	0	+3	0

5 Day Net Liquidating Value  Privacy

3/24/20	3/23/20	3/22/20	3/21/20	3/20/20
\$308,197.99	\$305,366.24	\$305,738.80	\$305,739.43	\$305,747.43
Today	B - 1	B - 2	B - 3	B - 4
0	0	0	0	+1

5 Day Net Liquidating Value  Privacy

7/28/20	7/27/20	7/26/20	7/25/20	7/24/20
\$392,797.84	\$390,419.25	\$392,974.00	\$392,974.00	\$392,974.00
Today	B - 1	B - 2	B - 3	B - 4
+1	0	0	0	0

5 Day Net Liquidating Value  Privacy

9/08/20	9/07/20	9/06/20	9/05/20	9/04/20
\$603,000.63	\$579,935.93	\$579,935.93	\$579,935.93	\$579,932.93
Today	B - 1	B - 2	B - 3	B - 4
0	0	0	0	0

Account Info

Trade Flash

Watchlist Don Kaufman L...

Symbol	Last	Net Ch...	High	Low	%Cha...
/ES[U20]	3335.75	-81.75	3447.00	3327.50	-2.39%
/NQ[U20]	11067.75	-481.00	11585.00	11052.50	-4.16%
/YM[U20]	27539	-535.00	28404	27440	-1.91%
/RTY[U20]	1506.2	-25.20	1553.4	1495.3	-1.65%
\$DJI	27500.69	-632.62	27925.23	27464.90	-2.25%
/VIX[U20]	29.85	+20	34.10	29.10	+0.67%
VIX	31.56	+81	35.93	30.52	+2.63%
/ZB[Z20]	176'08	+0'28	176'31	175'04	+0.50%
/ZN[Z20]	139'125	+0'115	139'165	139'005	+0.26%
/GC[Z20]	1938.5	+4.20	1948.3	1911.7	+0.22%
/CL[V20]	36.89	-2.88	39.59	36.13	-7.24%
\$DXY	93.462	+743	93.486	93.002	+0.80%
EUR/USD	1.17810	-0.00361	1.18274	1.17650	-0.31%
SPX	3331.84	-95.12	3379.97	3329.27	-2.78%
RUT	1504.5909	-30.7128	1534.37...	1499.82...	-2.00%
SPY	333.27	-9.30	342.64	332.88	-2.71%
IWM	149.87	-2.93	152.48	149.00	-1.92%
QQQ	269.95	-13.63	278.22	269.66	-4.81%
TLT	163.74	+1.00	165.26	163.74	+0.61%
XLF	24.64	-.65	25.10	24.55	-2.57%
7.7*AAP...	4587.182	-232.74...	4745.225	4567.739	-4.83%
MSFT	202.66	-11.59	210.03	202.20	-5.41%
AAPL	112.82	-8.14	118.99	112.68	-6.73%
NFLX	507.02	-9.03	522.00	495.00	-1.75%
FB	271.16	-11.57	279.30	269.42	-4.09%
AMZN	3149.84	-144.78	3250.845	3130.00	-4.39%
GOOGL	1523.60	-57.61	1555.55	1516.50	-3.64%
TSLA	330.21	-88.11	368.74	329.88	-21.06%
GS	202.48	-8.46	209.96	201.27	-4.01%
EEM	43.57	-.77	43.96	43.43	-1.74%
XLE	33.60	-1.27	34.37	33.22	-3.64%
USO	26.75	-1.76	26.96	26.2715	-6.17%
CAT	148.52	+34	150.76	145.72	+0.23%
COST	338.86	-7.71	344.92	338.18	-2.22%
BA	161.08	-9.97	166.90	160.50	-5.83%
WMT	138.45	-4.38	141.90	138.26	-3.07%

Monitor Trade Analyze Scan MarketWatch Charts Tools Education Help

Activity and Positions Account Statement FX Reports Strategy Roller

Today's Trade Activity

Working Orders: 5 orders

Filled Orders: 4 orders, 5 fills Show average fill prices

Cancelled Orders: 2 orders

Rolling Strategies

Position Statement Beta Weighting NOT WEIGHTED

INTRATRADING

Instrument	Qty	Days	Delta	Gamma	Theta	Vega	P/L %	P/L Day	Margin Req
BIDU			-16.07	3.09	-8.54	17.75	+7.38%	\$26.00	N/A (Split Posi...
HYG			-13.55	2.81	-1.51	12.90	+44.44%	(\$3.00)	N/A (Split Posi...
IWM			-31.51	5.01	-8.80	19.09	+1.72%	\$6.00	N/A (Split Posi...
SPY	24		.00	.00	.00	.00	0.00%	\$137.00	\$0.00
TGT			-16.69	3.01	-6.91	18.71	+9.47%	(\$16.50)	\$0.00
TLT	24		-.31	35.02	-31.48	71.79	-31.92%	(\$75.00)	\$0.00
VIX			57.45	-1.86	-21.45	.74	+1023.08%	(\$10.00)	N/A (Split Posi...
XLF	24		-29.70	40.43	-5.85	3.22	-98.70%	(\$20.00)	N/A (Split Posi...
XLP			-256.93	64.37	-17.32	16.60	-47.97%	\$278.00	N/A (Split Posi...
Subtotals			-307.31	151.88	-101.88	160.80	-35.07%	\$322.50	N/A (Split Posi...

Unallocated

Instrument	Qty	Days	Delta	Gamma	Theta	Vega	P/L %	P/L Day	Margin Req
AAPL	1		-208.00	18.14	-164.85	50.01	-89.38%	\$934.00	\$0.00
BA	1		-6.15	.36	-4.10	5.70	+4.93%	\$32.00	\$0.00
BIDU			.00	.00	.00	.00	0.00%	\$0.00	N/A (Split Posi...
FB			-84.93	.25	-9.06	26.58	+3.75%	\$1,066.00	N/A (Split Posi...
HD			.00	.00	.00	.00	0.00%	\$3.00	N/A (Split Posi...
HYG			-67.77	14.06	-7.57	64.52	+37.71%	(\$15.00)	N/A (Split Posi...
INTC	1TH		-93.50	5.70	-4.14	.97	-242.11%	\$43.50	N/A (Split Posi...
IWM	24		-11.04	1.86	-3.15	10.91	-1.03%	(\$7.00)	N/A (Split Posi...
QQQ	24		24.80	5.72	-52.32	63.70	-85.47%	(\$1,286.00)	\$4,800.00
SLV	24 1TH		-57.90	177.75	-30.66	5.11	-382.40%	(\$51.00)	\$900.00
VIX			3.94	.26	-4.84	.26	0.00%	(\$2.50)	N/A (Split Posi...
XLF	24		35.80	47.45	-3.32	5.82	+5.26%	(\$39.00)	N/A (Split Posi...
XLV			-6.65	3.64	-1.01	5.53	-16.02%	(\$50.00)	\$0.00
Subtotals			-471.38	275.20	-285.02	239.11	-58.07%	\$628.00	N/A (Split Posi...
Overall Totals							-7.64%	\$23,312.25	\$92,362.02

EQUITY: *****
OVERALL P/L YTD: *****

Risk... your money is on the line!

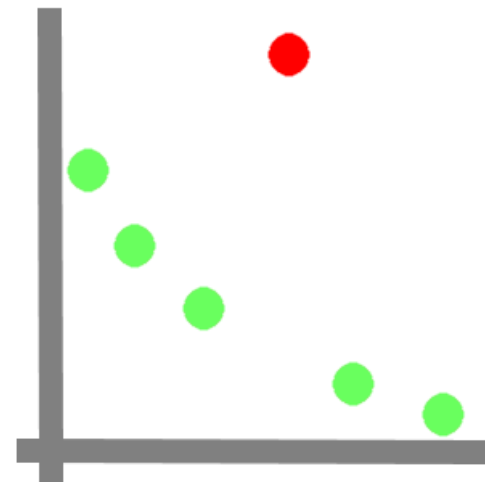
- How you handle your risk is directly correlated to your success in the markets.
- Too much risk and you will panic and close positions continuously at the worst possible time.
- At least you're consistent with your panic 😊

- I've looked at 100s of thousands of accounts
- I've seen what works and what doesn't
- What doesn't gets repeated over and over again!

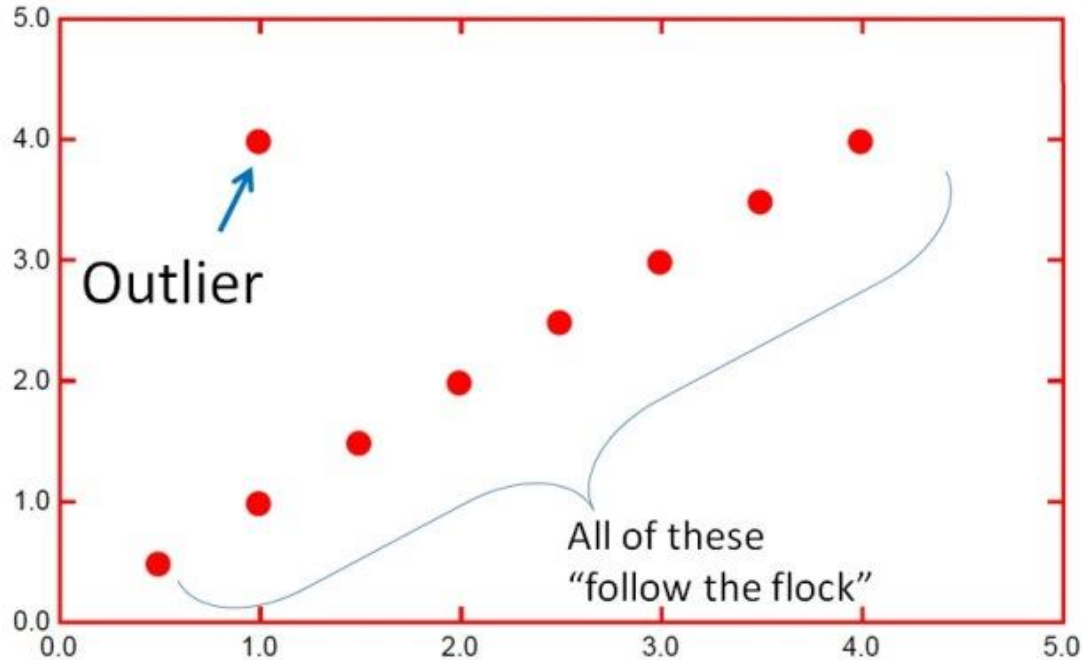


Outlier Moves!

And you thought being an outlier was a bad thing...



Getting to know what an “Outlier” is...



Never mind what the axes mean...

what are “outlier moves” in markets?

... and more appropriately how can we find these moves with consistency?

Volatility = Risk

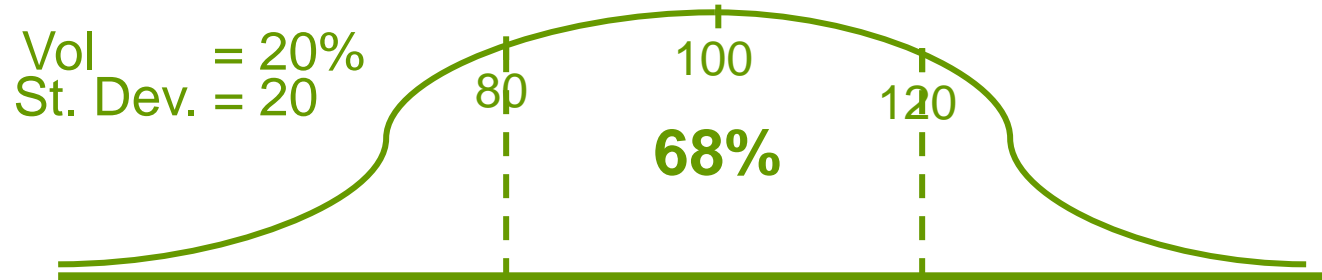
- Options markets can be thought of as putting a price tag on risk.
- Pricing in markets is determined via market participants.
- Ultimately, options pricing comes down to supply and demand.

- High risk equates to HIGHER options pricing
- Lower risk equates to LOWER options pricing.

- What has risk (volatility) been lately in markets?

What Can Implied Volatility Do for YOU?

Implied Volatility - volatility that justifies an option's current market price



Tesla can MOVE!

TSLA		TESLA INC COM		347.88	-70.44 -16.84%	B: 347.81 A: 347.97	HTB	NASDAQ	±14.661	Company Profile		
Underlying												
	Last X	Net Chng	Bid X	Ask X	Size	Volume	Open	High	Low			
	347.88 D	-70.44	347.81 Z	347.97 Q	1 x 1	75,629,957	356.00	368.74	335.99			
Trade Grid												
Option Chain												
Filter: Off		Spread: Single		Layout: Delta, Open Interest								
>	11 SEP 20	(3)	100 (Weeklys)									143.15% (±41.074)
>	18 SEP 20	(10)	100									137.06% (±66.809)
>	25 SEP 20	(17)	100 (Weeklys)									146.01% (±92.79)
>	2 OCT 20	(24)	100 (Weeklys)									148.49% (±113.076)
>	9 OCT 20	(31)	100 (Weeklys)									121.50% (±104.002)
>	16 OCT 20	(38)	100									124.96% (±119.633)
>	23 OCT 20	(45)	100 (Weeklys)									117.36% (±122.342)
>	20 NOV 20	(73)	100									112.31% (±152.827)
>	18 DEC 20	(101)	100									105.79% (±172.352)
>	15 JAN 21	(129)	100									102.22% (±191.879)
>	19 FEB 21	(164)	100									73.64% (±149.17)
>	19 MAR 21	(192)	100									106.07% (±261.905)
>	18 JUN 21	(283)	100									102.55% (±332.071)

Last IV = 1.2345 Last EM = 46.3476 Last High Bar = 464.6676 Last Low Bar = 371.9724 EM Skew%/Std Dev Adj(%) / Touches% = 70/100/90

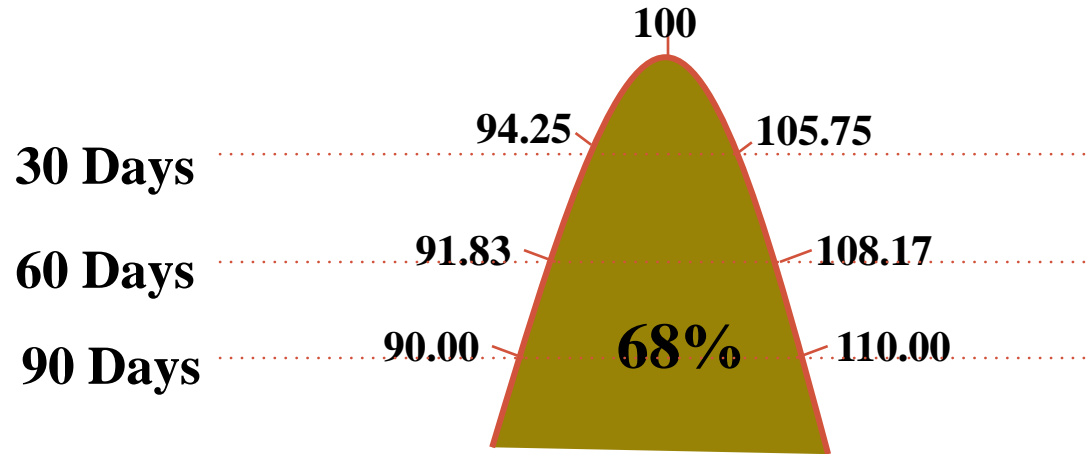
Auto-Expected Move visually displays weekly expected moves on a chart!



Put Your Trading Account in Ludicrous MODE!



Expected Moves



Know Your Volatility!

- There are two types of Volatility you need to understand -
 1. Implied Volatility - volatility that justifies an option's current market price
 - This is the volatility that sets options pricing.
 2. Historical Volatility - the standard deviation of past stock price movement.
 - Think of historical volatility as **ACTUAL STOCK PRICE MOVEMENT!**

Visualizing Expected Moves!

- Auto - Expected Moves can visually display a stock or ETF smashing through what the options markets “expected”.
- In other words... you can see a stock moving beyond what the options market has priced movement to be.

Last IV = 0.4214 Last EM = 10.725 Last High Bar = 294.305 Last Low Bar = 272.855 EM Skew%/Std Dev Adj(%) /Touches% = 70/100/90



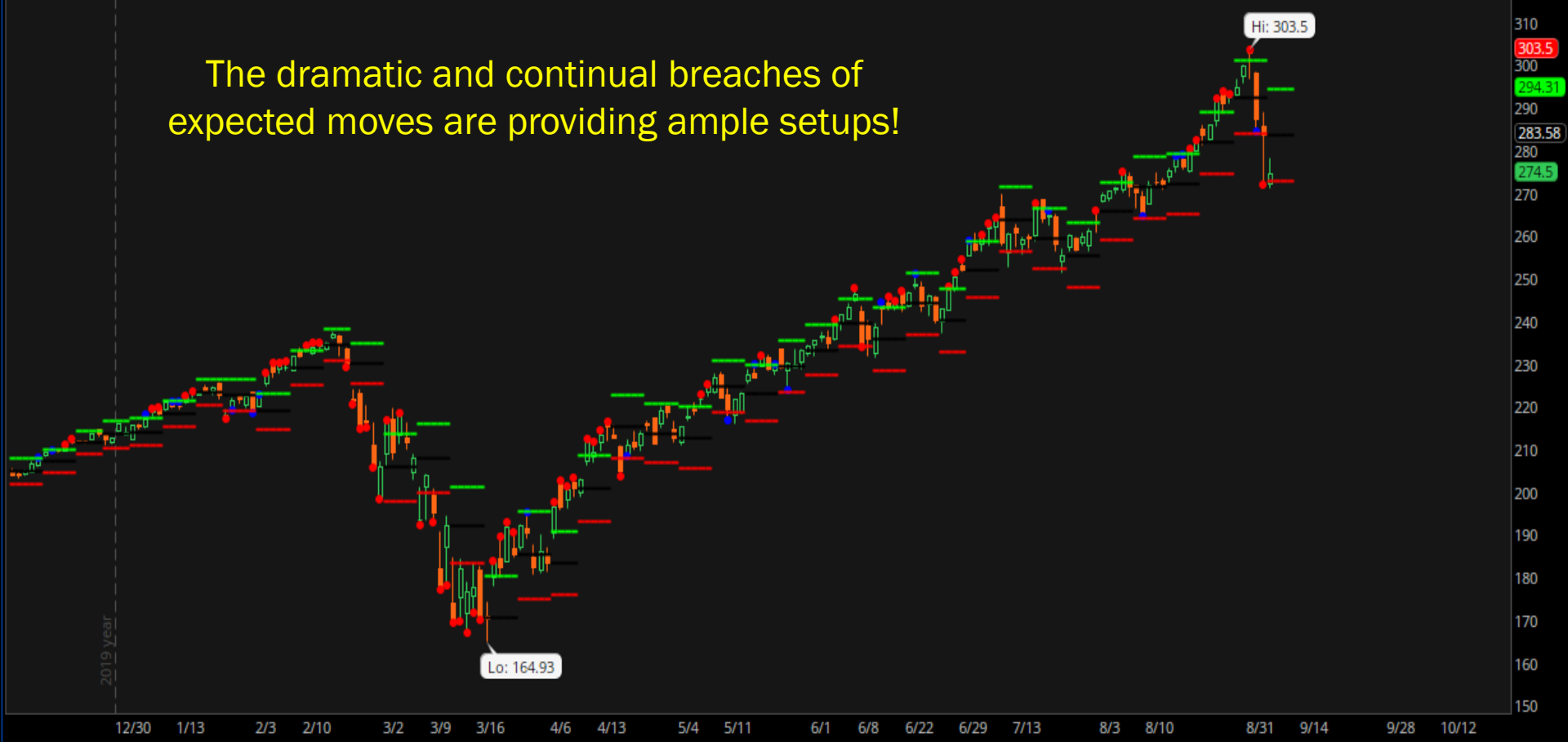
The IWM should stay INSIDE the Expected Move 68.3% of the time! However, in recent weeks the markets have SMASHED through the expected move making the opportunities MASSIVE!

320
310
303.5
300
294.31
290
283.58
280
274.5
270
260
250
240
230
220
210
200
190
180
170
160
150

Here is YOUR Edge....

- What if markets continually moved BIG however, options did a poor job of pricing in those larger moves?
- How could we go about finding stocks that are moving MORE THAN what the options markets expected?

The dramatic and continual breaches of expected moves are providing ample setups!



Every instance of the expected move being breached is an opportunity that you are missing!

How can we find these “outlier” moves with consistency?

**This is NOT guess work people use the
EXPECTED MOVE !**

Understanding implied volatility and expected move is a step in the right direction...

... but this needs to be turned into a strategy in order to see profit potential.

**How does this volatility “stuff”
translate into PROFITS?**

Big Moves are YOUR Opportunity...

Unpredictability is precisely what we are looking for!

Getting Your Gamma Iron ON!

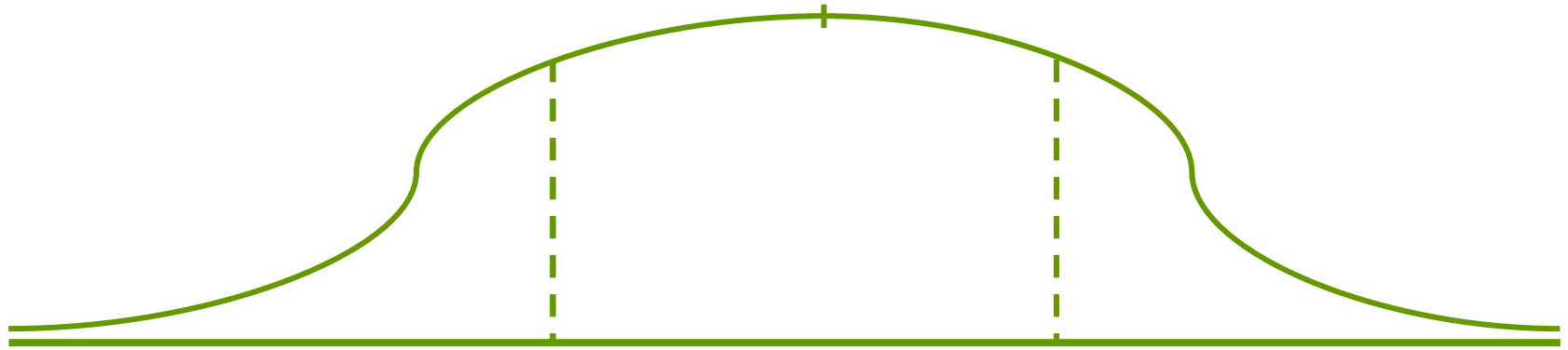


Positioning Your Portfolio for a BIG Move!

- Let's get down and dirty; how do you position yourself most effectively for the possibility of an extreme movements without exposing yourself to drastic risks?
- Do not get cute; this is serious and there are potentially billions up for grabs.



Gamma Iron Structure

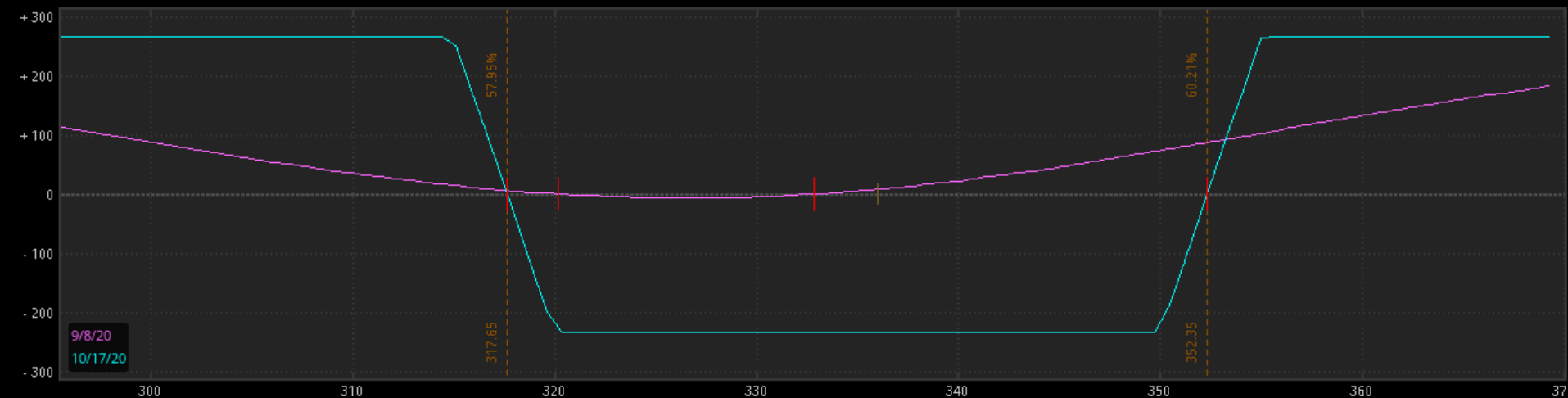


**You could be one trade away
from this...**

Gamma Iron Example

SPY Commission: **Exclude** Lines: **+1 @ Expiration** Step: N/A Metric: **P/L Open** Prob mode: **TOUCHING** Prob range: 68.27% Date: 10/10/2020

Drag chart to panDrag prices to change scale Click chart for data



Price Slices

Positions and Simulated Trades

ALL Hide Positions All 1 Series Single Symbol All groups Model: **Bjersund-Stenland** Interest: 0.01% Date: 09/08/2020

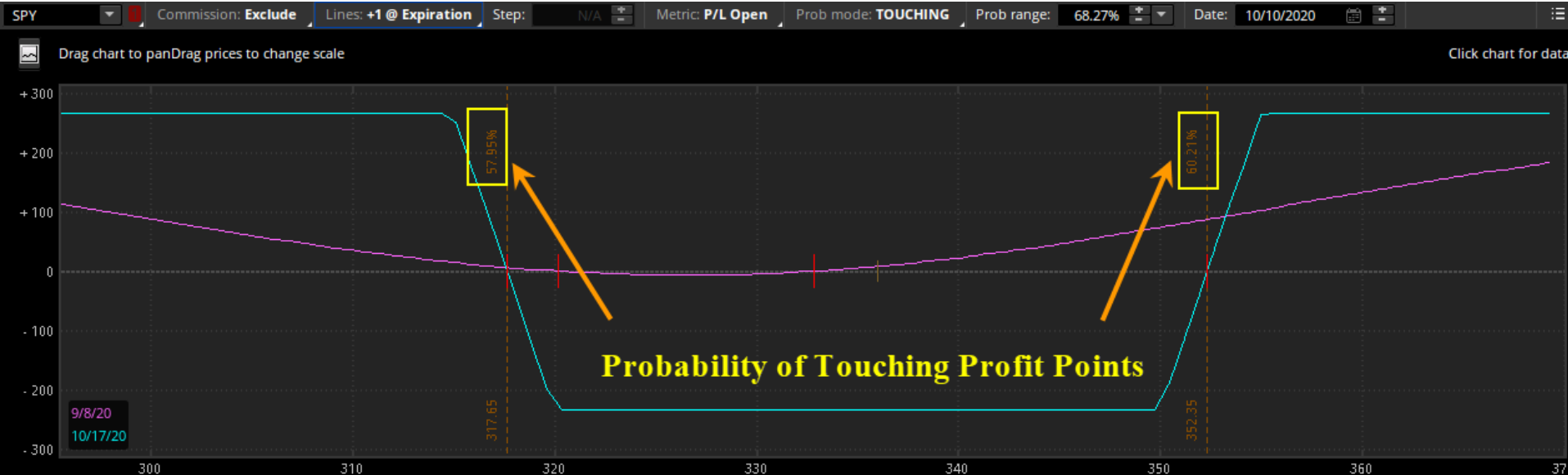
	Spread	Side	Qty/Symbol	Exp	Strike Type	Price	Yield	Vol	Delta	Margin Req
SPY										
STK			0	SPY			1.63%	32.49%	.00	\$0.00
IRON CONDOR		BUY	+1	SPY 16 OCT 20	350	CALL	3.33%	21.73%	3.06	
		SELL	-1	SPY 16 OCT 20	355	CALL	3.33%	20.85%		
		BUY	+1	SPY 16 OCT 20	320	PUT	3.33%	30.19%		
		SELL	-1	SPY 16 OCT 20	315	PUT	3.33%	31.70%		

Why you need Gamma Irons in your life now!

- **Market Gone Wild? Great Gamma Irons are designed to provide consistency in an inconsistent marketplace!**
1. Gamma Irons are non-directional
 2. Does not employ the use of stops
 3. Defines your risk
 4. Provides a high probability of success
 5. Limits capital exposure
 6. Never need to buy or sell the stock!

YOU NEED THIS IN YOUR LIFE!

Probability of Profit is HIGH people!



> Price Slices +

Positions and Simulated Trades

ALL Hide Positions All 1 Series Single Symbol All groups Model: Bjerk Sund-Stenland Interest: 0.01% Date: 09/08/2020

	Spread	Side	Qty/Symbol	Exp	Strike	Type	Price	Yield	Vol	Delta	Margin Req
SPY			0								
STK			0	SPY		ETF	.00	1.63%	32.49%	.00	\$0.00
IRON CONDOR		BUY	+1	SPY 16 OCT 20	350	CALL	2.35	3.33%	21.73%	3.06	
		SELL	-1	SPY 16 OCT 20	355	CALL	DEBIT	3.33%	20.85%		
		BUY	+1	SPY 16 OCT 20	320	PUT		3.33%	30.19%		
		SELL	-1	SPY 16 OCT 20	315	PUT		3.33%	31.70%		

Nomura Warns The “Negative Gamma Tremor” Is Here

SEPTEMBER 8, 2020

MARKETS | THE TRADER

How Unusual Trading Fueled the Stock Market’s Incredible Rally—and Fall

By [Al Root](#) Updated Sept. 4, 2020 2:34 pm ET / Original Sept. 4, 2020 1:40 pm ET

SoftBank’s Options Buying May Have “Doomed” Overconfident Bulls

By [Michael James](#) - September 7, 2020

This Monkey Knows Gamma Trading and so should YOU!



Welcome to Gamma Irons

- SPY Gamma Iron

5/6/20 06:55:22	IRON COND...	BUY	TO OPEN	SPY	19 JUN 20	304	CALL	3.10	2.45 LMT DEBIT
		SELL	TO OPEN	SPY	19 JUN 20	309	CALL	1.83	
		BUY	TO OPEN	SPY	19 JUN 20	271	PUT	7.41	
		SELL	TO OPEN	SPY	19 JUN 20	266	PUT	6.23	

6/1/20 10:39:37	IRON COND...	SELL	TO CLOSE	SPY	19 JUN 20	304	CALL	7.58	3.15 LMT CREDIT
		BUY	TO CLOSE	SPY	19 JUN 20	309	CALL	4.64	
		SELL	TO CLOSE	SPY	19 JUN 20	271	PUT	.92	
		BUY	TO CLOSE	SPY	19 JUN 20	266	PUT	.71	

- Every \$245 invested I got back \$315 a 29% return

Welcome to Gamma Irons

- GLD Gamma Iron

6/9/20 07:50:35	IRON COND...	BUY	TO OPEN	GLD	17 JUL 20	166	CALL	1.88	1.83 LMT DEBIT
		SELL	TO OPEN	GLD	17 JUL 20	171	CALL	.97	
		BUY	TO OPEN	GLD	17 JUL 20	157	PUT	1.52	
		SELL	TO OPEN	GLD	17 JUL 20	152	PUT	.60	

7/7/20 07:08:31	IRON COND...	SELL	TO CLOSE	GLD	17 JUL 20	166	CALL	3.04	2.39 LMT CREDIT
		BUY	TO CLOSE	GLD	17 JUL 20	171	CALL	.67	
		SELL	TO CLOSE	GLD	17 JUL 20	157	PUT	.07	
		BUY	TO CLOSE	GLD	17 JUL 20	152	PUT	.05	

- Every \$183 invested I got back \$239 a 30% return

What Members are Saying:



Jul 7, 7:08 AM

Cynthia: out at 2.36



Jul 7, 7:08 AM

Nick Duckstein: Filled GLD at 2.39



Jul 7, 7:08 AM

H A: GLD filled at 2.39



Jul 7, 7:06 AM

Neville Newman: That GLD IC is now only \$0.05 from my \$2.38 profit GTC profit target



Jul 7, 7:09 AM

MM: filled GLD at 2.36 and 2.40!

Welcome to Gamma Irons

- TLT Gamma Iron

7/7/20 07:54:04	IRON COND...	BUY	TO OPEN	TLT	21 AUG 20	167	CALL	1.81	1.68 LMT DEBIT
		SELL	TO OPEN	TLT	21 AUG 20	172	CALL	.79	
		BUY	TO OPEN	TLT	21 AUG 20	157	PUT	1.06	
		SELL	TO OPEN	TLT	21 AUG 20	152	PUT	.40	
7/10/20 06:39:34	IRON COND...	SELL	TO CLOSE	TLT	21 AUG 20	167	CALL	3.92	2.22 LMT CREDIT
		BUY	TO CLOSE	TLT	21 AUG 20	172	CALL	1.98	
		SELL	TO CLOSE	TLT	21 AUG 20	157	PUT	.49	
		BUY	TO CLOSE	TLT	21 AUG 20	152	PUT	.21	

- Every \$168 invested I got back \$222 a 32% return

Welcome to Gamma Irons

- SPY Gamma Iron

7/10/20 07:00:35	IRON COND...	BUY	TO OPEN	SPY	21 AUG 20	329	CALL	3.17	2.36 LMT DEBIT
		SELL	TO OPEN	SPY	21 AUG 20	334	CALL	1.89	
		BUY	TO OPEN	SPY	21 AUG 20	299	PUT	6.48	
		SELL	TO OPEN	SPY	21 AUG 20	294	PUT	5.40	

8/5/20 06:43:00	IRON COND...	SELL	TO CLOSE	SPY	21 AUG 20	329	CALL	6.67	3.09 LMT CREDIT
		BUY	TO CLOSE	SPY	21 AUG 20	334	CALL	3.69	
		SELL	TO CLOSE	SPY	21 AUG 20	299	PUT	.46	
		BUY	TO CLOSE	SPY	21 AUG 20	294	PUT	.35	

- Every \$236 invested I got back \$309 a 31% return

Welcome to Gamma Irons

- SPY Gamma Iron

7/20/20 09:23:33	IRON COND...	BUY	TO OPEN	SPY	28 AUG 20 (We...	336	CALL	2.82	1.84 LMT DEBIT
		SELL	TO OPEN	SPY	28 AUG 20 (We...	341	CALL	1.70	
		BUY	TO OPEN	SPY	28 AUG 20 (We...	304	PUT	3.89	
		SELL	TO OPEN	SPY	28 AUG 20 (We...	299	PUT	3.17	
8/10/20 06:30:17	IRON COND...	SELL	TO CLOSE	SPY	28 AUG 20 (We...	336	CALL	4.63	2.47 LMT CREDIT
		BUY	TO CLOSE	SPY	28 AUG 20 (We...	341	CALL	2.31	
		SELL	TO CLOSE	SPY	28 AUG 20 (We...	304	PUT	.70	
		BUY	TO CLOSE	SPY	28 AUG 20 (We...	299	PUT	.55	

- Every \$184 invested I got back \$247 a 34% return

Welcome to Gamma Irons

- IWM Gamma Iron

8/5/20 07:38:30	IRON COND...	BUY	TO OPEN	IWM	18 SEP 20	161	CALL	1.89	2.04 LMT DEBIT
		SELL	TO OPEN	IWM	18 SEP 20	166	CALL	.83	
		BUY	TO OPEN	IWM	18 SEP 20	143	PUT	3.03	
		SELL	TO OPEN	IWM	18 SEP 20	138	PUT	2.05	
8/11/20 06:47:54	IRON COND...	SELL	TO CLOSE	IWM	18 SEP 20	161	CALL	4.97	2.66 LMT CREDIT
		BUY	TO CLOSE	IWM	18 SEP 20	166	CALL	2.80	
		SELL	TO CLOSE	IWM	18 SEP 20	143	PUT	1.53	
		BUY	TO CLOSE	IWM	18 SEP 20	138	PUT	1.04	

- Every \$204 invested I got back \$266 a 30% return

Welcome to Gamma Irons

- TLT Gamma Iron

8/10/20 07:21:24	IRON COND...	BUY	TO OPEN	TLT	18 SEP 20	174	CALL	1.61	1.95 LMT DEBIT
		SELL	TO OPEN	TLT	18 SEP 20	179	CALL	.68	
		BUY	TO OPEN	TLT	18 SEP 20	166	PUT	1.75	
		SELL	TO OPEN	TLT	18 SEP 20	161	PUT	.73	
8/13/20 11:16:25	IRON COND...	SELL	TO CLOSE	TLT	18 SEP 20	174	CALL	.35	2.63 LMT CREDIT
		BUY	TO CLOSE	TLT	18 SEP 20	179	CALL	.16	
		SELL	TO CLOSE	TLT	18 SEP 20	166	PUT	4.67	
		BUY	TO CLOSE	TLT	18 SEP 20	161	PUT	2.23	

- Every \$195 invested I got back \$263 a 35% return

Welcome to Gamma Irons

- LULU Gamma Iron

7/20/20 07:02:41	IRON COND...	BUY	TO OPEN	LULU	28 AUG 20 (We...	345	CALL	7.20	1.89	LMT
		SELL	TO OPEN	LULU	28 AUG 20 (We...	350	CALL	5.90		
		BUY	TO OPEN	LULU	28 AUG 20 (We...	275	PUT	3.39		
		SELL	TO OPEN	LULU	28 AUG 20 (We...	270	PUT	2.80		

8/14/20 09:04:16	IRON COND...	SELL	TO CLOSE	LULU	28 AUG 20 (We...	345	CALL	11.82	2.60	LMT
		BUY	TO CLOSE	LULU	28 AUG 20 (We...	350	CALL	9.28		
		SELL	TO CLOSE	LULU	28 AUG 20 (We...	275	PUT	.19		
		BUY	TO CLOSE	LULU	28 AUG 20 (We...	270	PUT	.13		

- Every \$189 invested I got back \$260 a 38% return

Welcome to Gamma Irons

- QQQ Gamma Iron

7/28/20 11:42:12	IRON COND...	BUY	TO OPEN	QQQ 4 SEP 20 (Week...	275	CALL	2.61	2.17 LMT	
		SELL	TO OPEN	QQQ 4 SEP 20 (Week...	280	CALL	1.53		DEBIT
		BUY	TO OPEN	QQQ 4 SEP 20 (Week...	245	PUT	4.98		
		SELL	TO OPEN	QQQ 4 SEP 20 (Week...	240	PUT	3.89		
8/19/20 07:31:31	IRON COND...	SELL	TO CLOSE	QQQ 4 SEP 20 (Week...	275	CALL	7.44	3.07 LMT	
		BUY	TO CLOSE	QQQ 4 SEP 20 (Week...	280	CALL	4.49		CREDIT
		SELL	TO CLOSE	QQQ 4 SEP 20 (Week...	245	PUT	.45		
		BUY	TO CLOSE	QQQ 4 SEP 20 (Week...	240	PUT	.33		

- Every \$217 invested I got back \$307 a 41% return

What Members are Saying:



Jul 13, 12:55 PM

Daniel Fabian: Hey guys, new member here (been lurking the chat for about a month) was short the SPY. TheoTrade is the only membership that ive ever had that pays for itself and some!



Aug 8, 10:46 AM

Brent W: You won't find a more supportive and more profitable room anywhere in the retail trade business.



Jun 24, 12:05 PM

Tayyaba Ali: Don helped me pay for one year of Theotrade subscription with QQQ. 😊

Welcome to Gamma Irons

- QQQ Gamma Iron

8/24/20 06:54:01	IRON CON...	BUY	TO OPEN	QQQ	2 OCT 20 (Weekl...	300	CALL	3.02	2.13 LMT DEBIT
		SELL	TO OPEN	QQQ	2 OCT 20 (Weekl...	305	CALL	1.91	
		BUY	TO OPEN	QQQ	2 OCT 20 (Weekl...	270	PUT	5.50	
		SELL	TO OPEN	QQQ	2 OCT 20 (Weekl...	265	PUT	4.48	
8/26/20 06:30:01	IRON CON...	SELL	TO CLOSE	QQQ	18 SEP 20	285	CALL	8.41	3.04 LMT CREDIT
		BUY	TO CLOSE	QQQ	18 SEP 20	290	CALL	5.58	
		SELL	TO CLOSE	QQQ	18 SEP 20	255	PUT	1.06	
		BUY	TO CLOSE	QQQ	18 SEP 20	250	PUT	.85	

- Every \$213 invested I got back \$304 a 43% return

Welcome to Gamma Irons

- NFLX Gamma Iron

8/14/20 07:27:13	IRON CON...	BUY	TO OPEN	NFLX	25 SEP 20 (Weekl...	525	CALL	9.05	2.03 LMT DEBIT
		SELL	TO OPEN	NFLX	25 SEP 20 (Weekl...	530	CALL	8.00	
		BUY	TO OPEN	NFLX	25 SEP 20 (Weekl...	435	PUT	7.58	
		SELL	TO OPEN	NFLX	25 SEP 20 (Weekl...	430	PUT	6.60	
8/26/20 08:42:25	IRON CON...	SELL	TO CLOSE	NFLX	25 SEP 20 (Weekl...	525	CALL	29.63	2.65 LMT CREDIT
		BUY	TO CLOSE	NFLX	25 SEP 20 (Weekl...	530	CALL	27.22	
		SELL	TO CLOSE	NFLX	25 SEP 20 (Weekl...	435	PUT	1.93	
		BUY	TO CLOSE	NFLX	25 SEP 20 (Weekl...	430	PUT	1.69	

- Every \$203 invested I got back \$265 a 31% return

Welcome to Gamma Irons

- SPY Gamma Iron

8/31/20 09:23:41	IRON CON...	BUY	TO OPEN	SPY 9 OCT 20 (Weekl...	362	CALL	2.89	2.05 LMT DEBIT
		SELL	TO OPEN	SPY 9 OCT 20 (Weekl...	367	CALL	1.77	
		BUY	TO OPEN	SPY 9 OCT 20 (Weekl...	338	PUT	5.44	
		SELL	TO OPEN	SPY 9 OCT 20 (Weekl...	333	PUT	4.51	
9/2/20 12:21:10	IRON CON...	SELL	TO CLOSE	SPY 9 OCT 20 (Weekl...	362	CALL	6.63	2.69 LMT CREDIT
		BUY	TO CLOSE	SPY 9 OCT 20 (Weekl...	367	CALL	4.64	
		SELL	TO CLOSE	SPY 9 OCT 20 (Weekl...	338	PUT	4.55	
		BUY	TO CLOSE	SPY 9 OCT 20 (Weekl...	333	PUT	3.85	

- Every \$205 invested I got back \$269 a 31% return

Welcome to Gamma Irons

- HD Gamma Iron

9/2/20 07:16:35	IRON COND...	BUY	TO OPEN	HD	9 OCT 20 (Weekl...	305	CALL	2.70	1.70 LMT DEBIT
		SELL	TO OPEN	HD	9 OCT 20 (Weekl...	310	CALL	2.44	
		BUY	TO OPEN	HD	9 OCT 20 (Weekl...	265	PUT	4.11	
		SELL	TO OPEN	HD	9 OCT 20 (Weekl...	260	PUT	2.67	
9/8/20 06:43:57	IRON COND...	SELL	TO CLOSE	HD	9 OCT 20 (Weekl...	305	CALL	.70	2.44 LMT CREDIT
		BUY	TO CLOSE	HD	9 OCT 20 (Weekl...	310	CALL	.84	
		SELL	TO CLOSE	HD	9 OCT 20 (Weekl...	265	PUT	11.07	
		BUY	TO CLOSE	HD	9 OCT 20 (Weekl...	260	PUT	8.49	

- Every \$170 invested I got back \$244 a 44% return

Welcome to Gamma Irons

- SPY Gamma Iron

9/2/20 12:34:36	IRON CON...	BUY	TO OPEN	SPY	9 OCT 20 (Weekl...	370	CALL	3.56	2.11 LMT DEBIT
		SELL	TO OPEN	SPY	9 OCT 20 (Weekl...	375	CALL	2.37	
		BUY	TO OPEN	SPY	9 OCT 20 (Weekl...	344	PUT	5.51	
		SELL	TO OPEN	SPY	9 OCT 20 (Weekl...	339	PUT	4.59	
9/8/20 06:42:22	IRON CON...	SELL	TO CLOSE	SPY	9 OCT 20 (Weekl...	370	CALL	.51	2.75 LMT CREDIT
		BUY	TO CLOSE	SPY	9 OCT 20 (Weekl...	375	CALL	.34	
		SELL	TO CLOSE	SPY	9 OCT 20 (Weekl...	344	PUT	16.14	
		BUY	TO CLOSE	SPY	9 OCT 20 (Weekl...	339	PUT	13.56	

- Every \$211 invested I got back \$275 a 30% return

What Members are Saying:



Sep 8, 6:41 AM

Ken Baker Jr: SPY filled



Sep 8, 6:43 AM

Diamond: Filled SPY IC 2.76



Sep 8, 6:41 AM

CaptainOneLot: Filled SPY on tasty \$2.75



Sep 8, 6:45 AM

Éric: Filled SPY @ 2.80



Sep 8, 6:43 AM

Tess: SPY filled @2.77

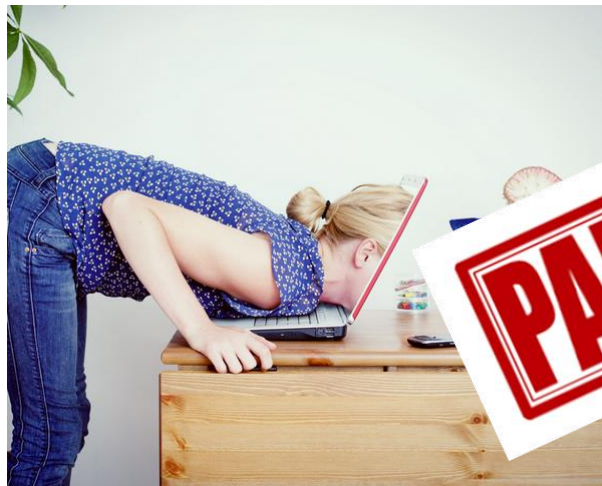


Sep 4, 7:44 AM

Derrick Allen: Don that was beautiful!

No time? NO PROBLEM!

- Each and every trade shown today was displayed LIVE at thetrade.
- The trade results we are showing are perfect for part timers...
- The GAMMA IRON is hands-off and uses “set and forget” order types.
- Even a fraction of your time is enough too see results.



PART TIME

Characteristics of Gamma Irons

- Increase in value when exposed to heavy volatility.
- Increase in value when markets sell-off or rally huge!
- Significant profit potential in a downside market move
- Significant profit potential in a upside market move
- Loses minimal capital if markets continue to drift or remain FLAT!.
- This is the PERFECT spread to reduce risk of a stock portfolio long OR short!
- This is an excellent tool for those seeking returns on a big market event.

IRON CONDOR	BUY	+1	SPY 16 OCT 20	350	CALL	2.35	LMT
	SELL	-1	SPY 16 OCT 20	355	CALL		DEBIT
	BUY	+1	SPY 16 OCT 20	320	PUT		
	SELL	-1	SPY 16 OCT 20	315	PUT		

Building the Gamma Iron

- Do not let options intimidate you!
- The Gamma Iron below is being done for a 2.35 debit.
- However, this spread is akin to a massive chainsaw.
- Used correctly, can be extremely effective in creating returns!
- Used incorrectly, you may cut off a few fingers.

IRON CONDOR	BUY	+1	SPY 16 OCT 20	350	CALL	2.35	LMT
	SELL	-1	SPY 16 OCT 20	355	CALL	DEBIT	
	BUY	+1	SPY 16 OCT 20	320	PUT		
	SELL	-1	SPY 16 OCT 20	315	PUT		

**This is what you need to know to
successfully Create Gamma Irons with
Minimal Risk...**

GAMMA

When and where do I place my Gamma Irons?

**How often should I place these
Gamma Irons and do they need to be
continually monitored?**

How do I setup the trades and what is the correct market volatility to place the trades within?

What expiration cycle do I use to create my Gamma Iron?

What options do I buy and which options should I sell?

What is the correct probability of success for a Gamma Iron?

Do I need a large amount of capital in my account to do this?

**What underlying's, stocks, or indices
make the best candidates?**

**How do I know when to get in and
when to get out?**

What are the percentage returns supposed to be?

Can I do this in an IRA or Retirement account?

How do I size my trades for my account size?

What is the right amount of risk for ME?

How do I build the Gamma Iron?

**Let me show you what we do here at
theotrade...**

TheoTRADE creates recipes in trading...

Trading is about Answering the What Ifs

- What might be a good Gamma Iron candidate?
- What is the correct options expiration cycle to trade?
- How much capital do I commit to these positions?
- When should I execute the trade?
- What Strike Price Options do I buy and sell?

TheoTrade Has Your Answers

We Build Recipes with definitive criteria, “**checklists**” for each strategy and each unique variable you will encounter.

TheoTrade is the Answer to Your Questions

- What is the right probability for my trade?
- How many options contracts do I trade in for my account size?
- When do I close my Gamma Iron?
- What if the stock/etf sells off big? What is the correct return for the strategy?
- What if the stock rallies massively?
- Can I fix a losing trade?

How, When, Why, at What Price?

This is just the beginning of the many variables you will face while trading Gamma Irons!

You can read what a spread is... you might even know how to build an Iron Condor...

...but you need thetrade's recipe for success for Gamma Irons!

- 20 plus years trading experience
- access to client order flow for 15 years
- viewed and studied millions of trading accounts
- ran education for over 15 years at a firm with the largest options order in the industry!

Criteria is your recipe for success

- The following strategy and corresponding criteria requires the utmost attention to detail.
- We spent YEARS fine tuning this trade setup and criteria, when we approach the section on criteria **FOLLOW the STEPS** to build a trade!



Gamma Irons: Ultimate Guide to Buying Iron Condors

- Trade Instructor: Don Kaufman
- 3 hour course is available immediately with 24/7 access
- Class slide deck that includes entry and exit criteria checklist available immediately for download.
- Course is archived immediately with 24/7 access or download capability on theotrade mobile for iOS and Android!

~~\$497~~

Gamma Irons! – Workshop Curriculum

1. Learn how to use the Iron Condor Strategy from a unique LONG GAMMA perspective and find out what other traders are missing!
2. Learn to take directional bias out of the equation and use the power of options volatility to your advantage!
3. Step by step criteria on how to enter the trade and when to take off the trade. Nothing left to the imagination.
4. How and where you can find edge in buying Irons in order to generate a steady income stream for accounts of all sizes.
5. How to buy options premium in the current market environment using Gamma Iron Condors.
6. Guide to trading an Gamma Iron Condors regardless of market direction.
7. Using Gamma Iron Condors repetitively to generate incremental gains in trading accounts \$2,000 plus and in retirement accounts.

...you want a bonus?

TheoTRADE goes beyond one class or one indicator...

...you want everything to trade and invest at one place and at one price.

Bonus #1 ACCESS to OVER 96 Trading Classes!

Gamma Irons: Ultimate Guide to Buying Iron Condors – archive available immediately!

- ALL available immediately On-Demand and on TheoTrade Mobile Application
- Maximum Returns with Infinity Spread Package (a \$497 Class) - archive available immediately!
- Guide to Surviving and Thriving in Extreme Volatility (a \$497 Class)
- Volatility Back Spreads (a \$497 Class)
- Guide to Small Account Growth with In/Out Spreads Class (a \$497 Class)
- Growing A Small Account with Black Book Spreads Class(a \$497 Class)
- How to Collect Income Being Short (a \$497 Class)
- The Next Big Short: Risk Twist Spread Class (a \$497 Class)
- Guide to Selling High Probability Spreads (a \$497 Class)
- Iron Up: Iron Condors for Income (a \$150 Class)
- Sell Premium and Minimize Your Risk (a \$497 Class)
- Day Trading Nasdaq Futures Class (a \$100 Class)
- Covered Calls: Income Generation for Your Stocks (a \$150 Class)
- Essential Skills for Consistency in Trading Class (a \$200 Class)
- The Top 10 Skills for Growing a Small Account (a \$100 Class)
- Pairs Trading: The Final Frontier Class (a \$200 Class)
- And MANY MORE with NEW Classes added every month!

ACCESS to OVER \$9,000+ in classes alone!

Your TheoTrade Instructors

- Jeff Bierman CMT – Analyst, Trader, & Former Chief Technician for TD Ameritrade
- Matt Williamson – market neutral/premium selling options strategist
- Corey Rosenbloom CMT – Senior Strategist & Swing Trader
- Brandon Chapman CMT – Macro Economics, Technicals and Fundamentals
- Steve “Slim” Miller - 43 year veteran stock, options, futures trader
- Tony Rago - Nasdaq Futures and Intraday Strategist
- Blake Young CTA – Market Profile, Futures, Currency, and Commodity Trader

Bonus #2 All-Access TheoTRADE V.I.P. Membership Pass FREE

- 3 Months - Unlimited Access to TheoStream
- Live Trading Chat Room: broadcasting live 6 hours per day.
- Traders Provide Real Trade Ideas and Real-Time Market Insights and Analysis
- Text/Push Notification Trade Ideas (including Gamma Irons)
- 5 distinct trading portfolios
- Daily Coaching Sessions with Timely Topics on Stocks, Options and Futures
- Instructors directly answer your trading questions via email!

ACCESS to \$997+ support, trades, and insight!

Access to 59 proprietary indicators and scans

- **Auto Expected Move**
- SPX Expected Move
- SP500 Gravity Points
- TheoTrade RSI Laguerre
- QaunTicks – cumulative tick indicator
- NQ Levels
- Next Generation Squeeze Indicator
- Complex Position Tracker
- IV Rank vs IV Percentile
- TheoQuant Trade Setup
- Unusual Put Options Activity
- Sizzle Index Scan
- And many more!

ACCESS to \$1,800+ in indicators and scans

Bonus #3 – LIVE CLASS

Market Profile - Discover Tomorrows Levels Today

- Trade Instructor: Blake Young
- LIVE – Live on Saturday, September 19th from 9am–11am Central Time
- Course is archived immediately with 24/7 access or download capability on theotrade mobile for iOS and Android!

Market Profile - Discover Tomorrows Levels Today

1. Find short-term and long-term turning points
2. Identify new trends for the entire month
3. See future price levels today
4. Find true supply and demand levels
5. Ignore noise and fake-outs
6. Identify profit taking levels for existing trades
7. Manage risk with key price levels

TheoTRADE includes **EVERYTHING** you need to invest and trade....

classes

coaching

email access to instructors

live trading room and live trades

indicators and scans

mobile access 24/7

...everything you need to succeed



Theo**TRADE**

is the

NETFLIX

for traders

TotalTheo ONLY \$297 for 3 months

- ✓ **Gamma Irons: Ultimate Guide to Buying Iron Condors** – course is INCLUDED in the TotalTheo® Unlimited Streaming
- ✓ **ACCESS to OVER 96 Trading Classes!** ALL available immediately On-Demand
- ✓ **New Monthly Classes**
- ✓ **Live Trading Chat Room: Traders Provide Real Trade Ideas and Real-Time Market Insights and Analysis– broadcasting live 6 hours per day.**
- ✓ **Indicators** – 59 proprietary indicators and scans.
- ✓ **Text/Push Notification Trade Ideas and 5 distinct portfolios**
- ✓ **Daily Coaching Sessions with Timely Topics on Stocks, Options and Futures**
- ✓ **Instructors directly answer your trading questions via email!**

TheoTrade.com/gamma

TheoTRADE is a Riskless Trade

- Everything you need to start trading from novice to expert
- Money back guarantee – trade with us over the next 3 months if you are not satisfied, email support@theotrade.com, provide us the details of your trades and receive a full refund.

Money Back Guarantee Stipulations -

- 10 trades using any of the theotrade strategies and criteria in the next 3 months
- Initial account value must exceed \$2,000 USD
- You MUST follow the theotrade criteria for Gamma Irons!
- Provide “real” account statements of trades; this is not paper trading people!

Get into TheoTRADE Now

- We will work with you directly...
- **ONLY 30 spots** on the theotrade **Riskless Trade DEAL!**
- Matters of trade size - we trade live!
- Unlimited email mentoring
- Send us your trades
- \$297 riskless offer has NEVER been available before with Gamma Irons plus the live -- **Market Profile - Discover Tomorrows Levels Today**

What Members are Saying:



Ken I [redacted] Aug 03 11:42



WOOOOOOHOOOOO THANK YOU DON!!!

I am never sure of trades that are new to me that I structure myself. This is great to here..

Not to brag but this is due to you and your magnificent team I am up this year \$1,670,762 in profit!!!

Yes, I am going to pull a big hunk of this out of my and Wife's accounts plus I will give my granddaughter \$50,000 to work on her master's degree thanks to all of you!!!

I will let you know how this trade goes. I need to check the chart on that Japan ETF.

Thank You Again,

The [redacted] Family

What Members are Saying:



Curtis Friday 10:14



Don,

Please allow me to try to impress upon you how incredibly valuable your first hour in the chat room was today. Your true concern for the welfare of your clients/listeners is unmatched in the industry, and you gave incredibly practical advice for those feeling the pain — almost as if you were their personal trading coach. It was amazing. I only wish all of my “I don’t want to sell, in case it keeps going higher” friends were listening.

Keep up the great work and THANK YOU.

Curtis

Curtis CFA, CMT
Former Institutional PM

TheoTRADE Access You Get TODAY for \$297

- **Gamma Irons: Ultimate Guide to Buying Iron Condors –**
- **FREE BONUS #1** - 3 Months - All-Access TheoTRADE V.I.P. Membership Pass FREE
 - Daily live trading and chat room, 6 hours per day
 - Archived 24/7
 - Text/Push Notification trade ideas and portfolios you can follow
 - Trading indicators and scans
 - Daily coaching sessions with 10 hours of live support
- **FREE BONUS #2** - 3 Months - Unlimited Access to TheoStream
 - Over 96 classes- Day trading, swing trading, technical trading, beginner options trading, advanced options trading, and much more.
- **FREE BONUS #3 - LIVE CLASS -- Market Profile - Discover Tomorrows Levels Today**

TheoTrade.com/gamma

What Members are Saying:



Todd Sumrall Friday 18:59

Hi Don,

Don't know if you remember, but I emailed you a few weeks ago and told you my delta was + a couple thou or more. You told me to smash it or I was gonna be in trouble. I smashed it. You saved my account. I just want to thank you.

FYI, before Theo, I had no clue about portfolio delta.

Big hearty thanks to you and all of your team. My finances would of been a goner without your advice.

You can use this if you want,

Thank you very much

Todd Sumrall

TheoTrade.com/gamma

Follow me to this link for the Auto - Expected Move Indicator

What Members are Saying:



Kristopher

Aug 06 17:47



For Don:

I just wanted to take a second and say this thank you. You've changed my entire mindset on trading from gambling on individual positions to building a portfolio that manages risk. I still have a long way to go but today was notable for me. After probably close to a year of membership, today I found myself managing a position using delta and actually understanding what I was doing and why. At that moment I realized this is a whole different ballgame than what I thought it was. I've probably lost/left on the table at least 6 figures because I didn't understand what clicked for me today.

So, thank you.

Your Questions Answered...

1. You need a laptop and a internet connection... we have everything you need to get started from absolute novice to the most extreme traders.
2. This is NOT a membership, we will NOT auto-renew or bill you again!
3. We are now providing GAMMA IRONS Weekly Video Updates so you can follow ALL the moves we make!
4. Theotrade archives EVERYTHING... we understand not everyone can watch live trading throughout each trading session.
5. We will provide you access to theotrade mobile where you can download archives and view at your leisure.
6. Add your cell phone number when enrolling to receive trade ideas via text message and download theotrade mobile for push notifications!
7. You can email us at ANYTIME and receive a response within 24hours, including trade related questions!
8. You will gain access to every course theotrade has done in the previous 4 years! Including classes, coaching, and live trading sessions. All archives are searchable, name a trading topic and theotrade has an archive on it!
9. All these trades can be done inside an IRA or retirement account and with as little as 2k within the account.
10. We at theotrade can help you get approved for options trading at several major brokers.
11. Remember 30 Riskless trade spots are available!
12. Get results, take action, enroll for theotrade NOW, there is NO risk to you!

TheoTrade.com/gamma

TheoTrade.com/gamma

What Members are Saying:



Brian [redacted] Mar 16 08:41



Don,

Wow. I want to again say thank you for what you have taught me in the last two and a half years. I bought into what you taught about risk twist spreads and duration positions, and started to trade options almost a year ago. I missed out on the last of the market move up, but at the moment my IRA is up 14.8% for the year. What I have invested in TheoTrade has been SO worth the money!

Thank you!!!

Brian

What Members are Saying:



Chris [redacted] Mar 26 12:56



Don...

I've learned more in the past four weeks managing and defending my portfolios than I've learned in my entire trading life. Nothing I've learned would have been possible without having tuned into your teachings for the past two years.

Also, my atomic hedge took a large sting out of my long term IRA destruction...

You clearly don't have to be a teacher, but thank you for doing so!

Stay safe-

Chris

What Members are Saying:

BTW - you guys are rocking it!
Very impressed.

It's really refreshing to have you guys putting this together and sharing knowledge and not up selling everything and turning and burning your customer base. You've got a customer for life in me because of this approach - and I'm sure I'm not the only one!

David

From TheoTrade ChatRoom: It's so Amazing what we LEARN when we LISTEN (Thanks! to my Ex-Wife for this quote)!!! Don is a Wonderful teacher!!! I have really enjoyed in LISTENING and LEARNING from him the last few months. I love how Don goes about explaining and showing how to go through the mechanics.

KingCoal7

What our Clientele are Saying:

This is the second time to I have been with Don's service. It took awhile to sink in but In-Out spreads saving my A** now and doing them everywhere when they fit and also using the Risk-Twist trade on both of my accounts.

It is embarrassing to think of the tens of thousands I spent on option info and classes. Don's classes are the greatest.

Gary M

Don I closed the TLT Risk Twist Spread (RTS) for 127% gain, price was moving around so much and so fast I ended up doing a "market" order. Pretty excited to see the whole RTS trade cycle and how well it worked.

Vicky W